

We acknowledge the many First Nations, Métis and Inuit who have lived in and cared for these lands for generations. We are grateful for the traditional Knowledge Keepers and Elders who are still with us today and those who have gone before us.

Alberta Innovates respectfully acknowledges that we are situated on traditional territory of the Treaty 6, Treaty 7, and Treaty 8 First Nations; home to Métis Settlements, the Métis Nation of Alberta, and Regions 2, 3 and 4 within the historical Northwest Métis Homeland. We respect the histories, languages, and cultures of First Nations, Métis, and Inuit whose presence continues to enrich our vibrant community.

We make this acknowledgement as an act of reconciliation and gratitude to those whose territory we reside on or are visiting.

Inclusive Innovation

Maximizing Cleantech Funding Potential

Heather Campbell, P.Eng.

November 28th, 2022



ALBERTA INNOVATES

Clean technology competitiveness is intrinsically linked to inclusion and a just energy transition.



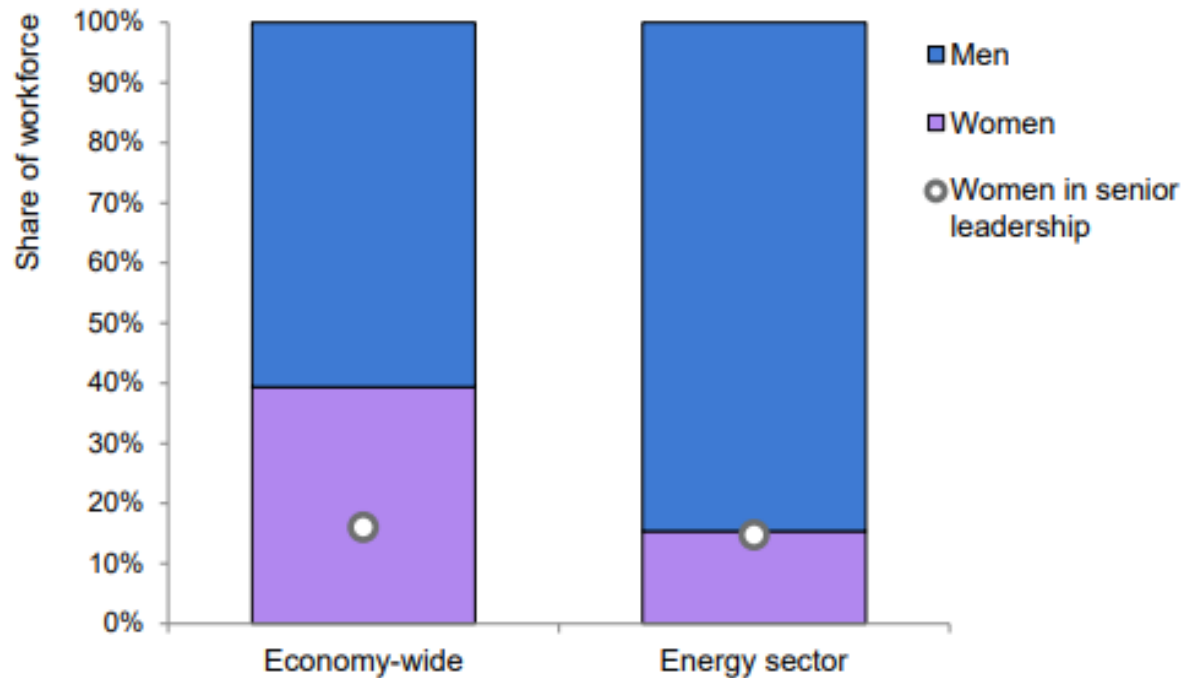
Our competitiveness depends on inclusion



- Understand the underlying concept of a ‘just transition’
- Energy transition versus energy transformation: no one is left behind
- What did we learn in the pandemic? How are we applying it?

There is a clear need to ensure the future clean technology and energy workforce is inclusive and enables equality globally

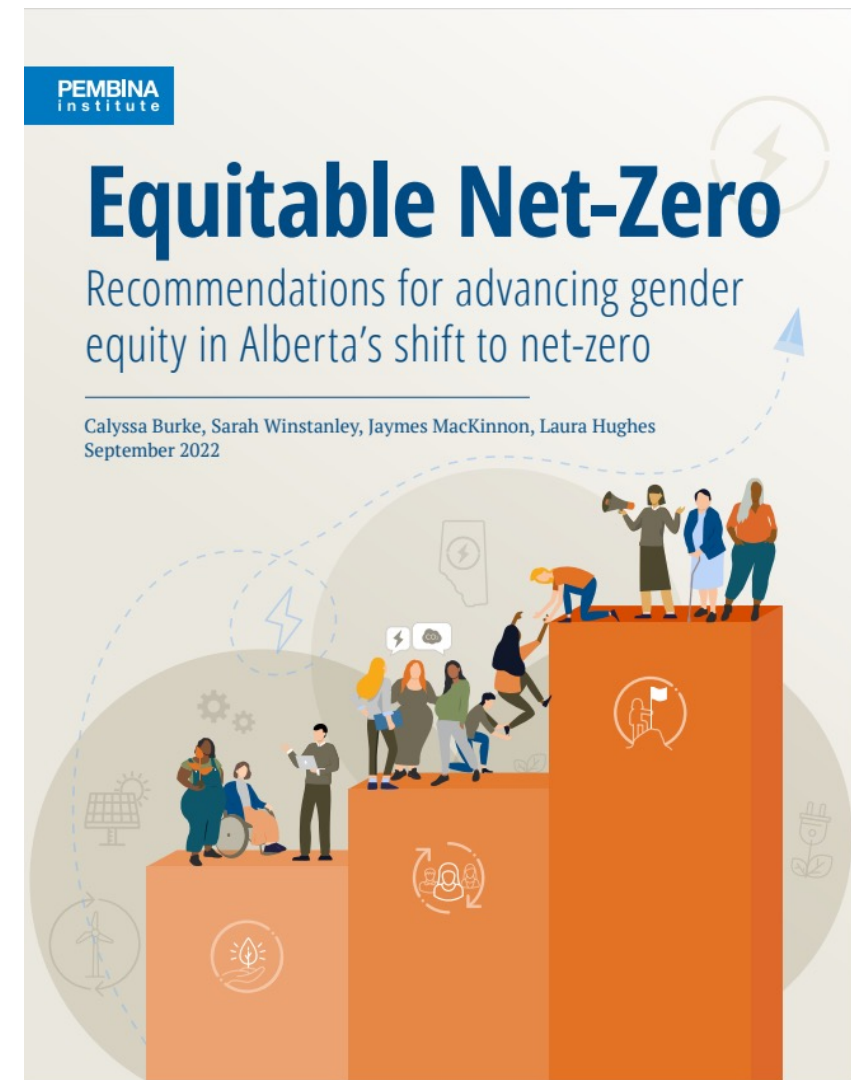
Workforce by gender, economy wide and in energy, 2019



IEA. All rights reserved.

Notes: Employment shares are from ILO, covering 48 countries for the energy sector. Senior management shares are global IEA calculations based on the Refinitiv PermID database.

Sources: IEA (2022), [World Energy Employment: Gender and Energy Data Explorer](#).



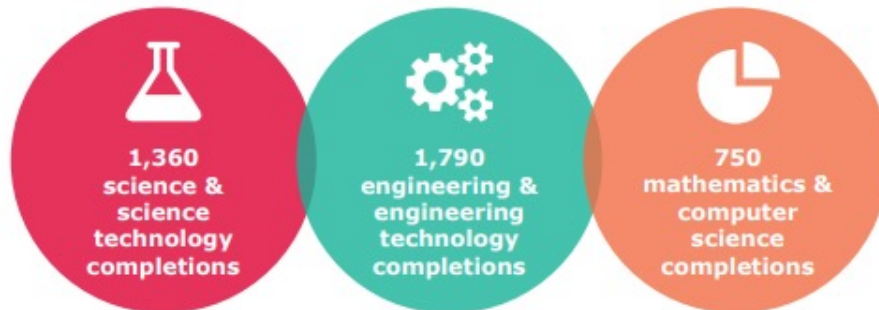
Women are heavily under-represented in the energy labour force internationally.

An authentically inclusive energy transition is a priority

- 22% of Alberta clean technology ventures have a female founder (compared to 15.6% of Alberta's technology development sector)
- Companies with female founders accounted for only 7% of the total investment raised from public funding and private investment in Alberta.

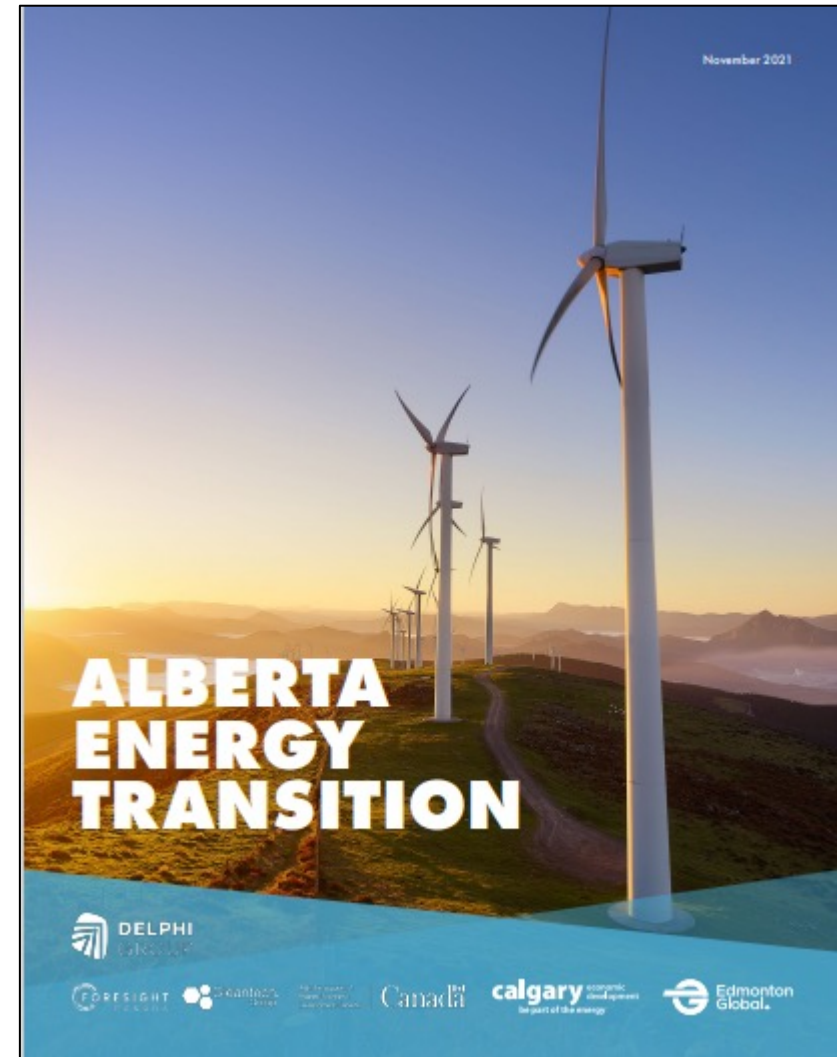
3,900 Post-Secondary STEM Completions

STEM programs account for **27 percent** of all bachelors degree or higher program completions in Calgary

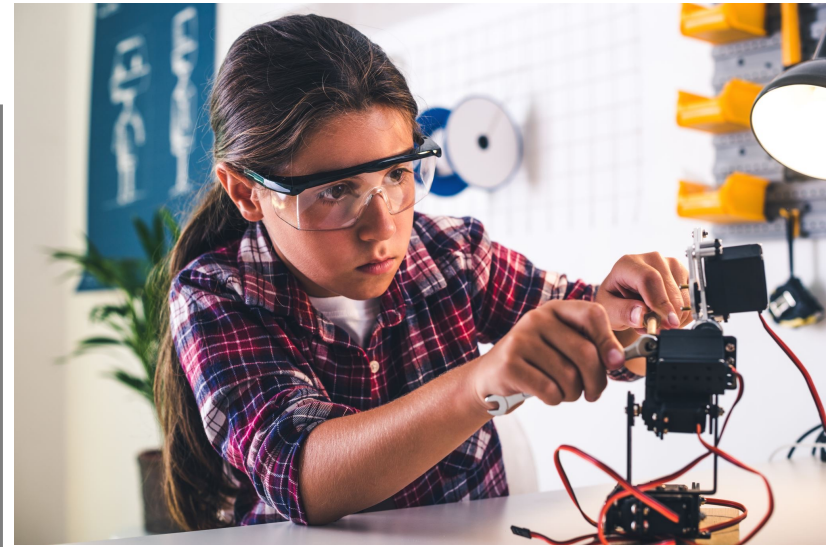


calgary economic development
be part of the energy

Note: STEM groupings may not sum to total due to rounding.
Source: Alberta Advanced Education, Credential Completions by 6-digit CIP code, 2019-20



Energy transition changes our metrics, priorities and values. It also creates new opportunities for all. That's a just transition.



How do we practically put an inclusive lens on clean technology in our work?

GUIDING EQUITY QUESTIONS



A What ASSUMPTIONS are you making?

B Who could be left BEHIND?

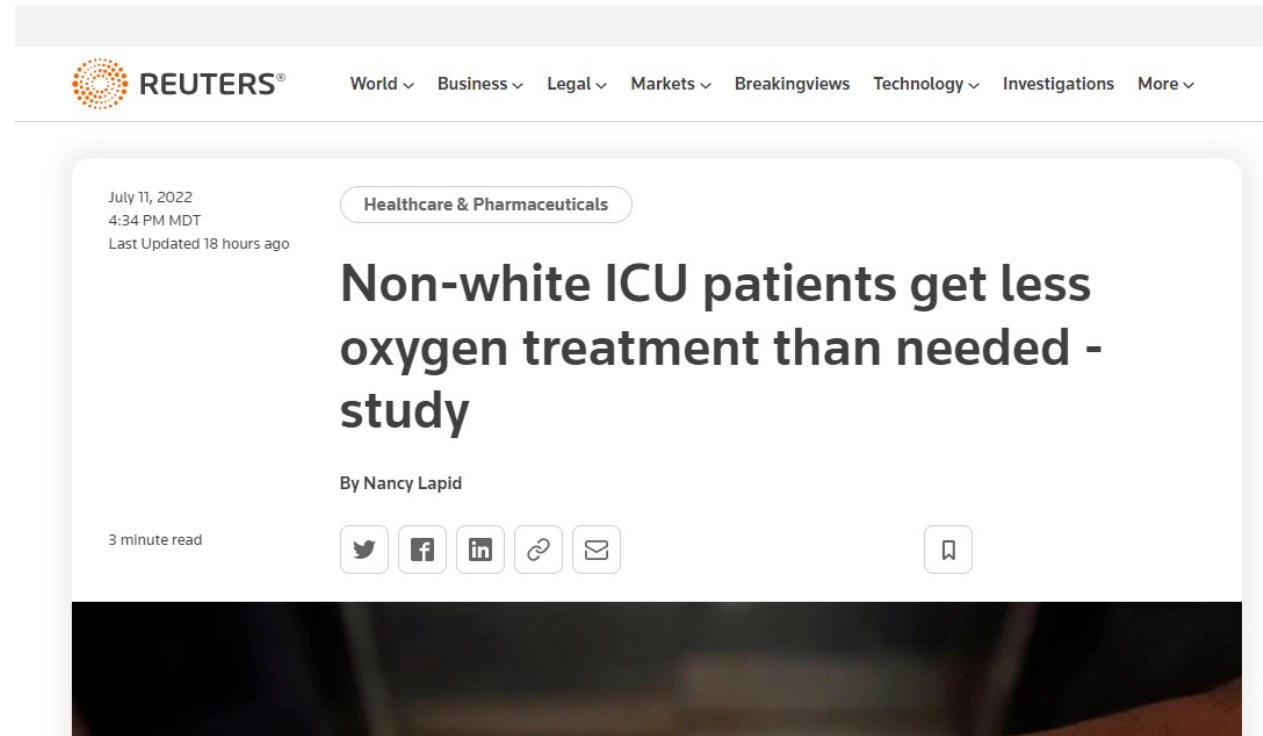
C Who did you CONSULT? How are you COMMUNICATING?

D What are your research and DATA gaps?

E How are you advancing EQUALITY?



Ensure we support the development of clean technology that respects the full plurality of Albertans.



**So, now what? How does one
answer the application questions?**



The Impacts Questions! Tips and Tools

QUESTION

Provide a **quantitative evaluation of economic impacts** for the Project and for those that would accrue from successful commercialization. Include the methodology and assumptions used to arrive at this evaluation and indicate when the impacts will start to accrue and the duration of these impacts:

Provide an assessment of the **direct and indirect environmental impacts**, both positive and negative, on environmental systems as a result of the Project and successful commercialization, relative to the current baseline. Include the methodology, assumptions and, where possible, quantitative evidence used to arrive at this evaluation. Indicate when the impacts will start to accrue and the duration of these impacts:

Provide an assessment of the **direct and indirect social impacts**, both positive and negative, as a result of the Project and successful commercialization. Include the methodology, assumptions and, where possible, quantitative evidence used arrive at this evaluation. Indicate when the impacts will start to accrue and the duration of these impacts.

GUIDING NOTES

Consider areas such as jobs (i.e., new jobs, retraining, development of HQSP, etc.), sales, improved efficiencies, development of new commercial opportunities or new economic sectors, attraction of new investment, and increased exports.

HQSP refers to Highly Qualified and Skilled Personnel - those likely to seek a career in science, research, technical, operations, and management activities in Alberta in the next 5 to 10 years. (600 Words Max)

Consider environmental systems such as atmospheric, terrestrial, aquatic, biotic, climate, etc. Examples include air emissions (including GHGs) and quality, water supply, water use,) water quality protection, waste reduction, land and biodiversity. (600 Words Max)

Consider contributions towards: Equity, Diversity and Inclusion; community and individual health; strengthened stakeholder involvement; leadership within an emerging sector, etc. (600 Words Max)

Thank you, questions?

